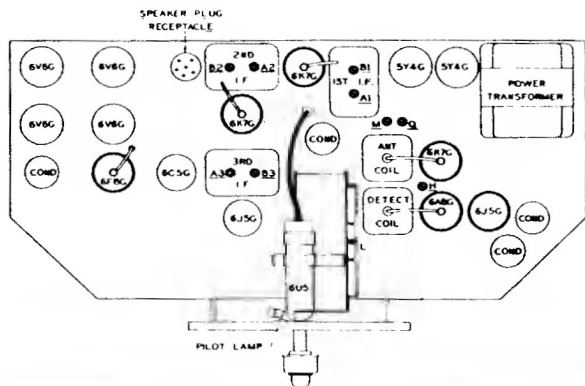


Location of Tubes and Trimmers



Models 15S479—15S495

Chassis No. 1503

PART NO.	DESCRIPTION	QTY	PART NO.	DESCRIPTION	QTY	PART NO.	DESCRIPTION	QTY	PART NO.	DESCRIPTION
C1	22-821 THREE BAND VARIABLE	1	C20	22-358 50K MFD.	1	R1	22-668 150M OHM	1	A1	1E1 I.F. TRANS. (SEE NOTE 1)
C2	22-822 22MFD.	1	C21	22-358 50K MFD.	1	R2	22-668 150M OHM	1	A2	1E2 I.F. TRANS. (SEE NOTE 1)
C3	22-823 1MFD.	1	C22	22-358 50K MFD.	1	R3	22-668 150M OHM	1	A3	1E3 I.F. TRANS. (SEE NOTE 1)
C4	22-824 22MFD.	1	C23	22-358 50K MFD.	1	R4	22-668 150M OHM	1	A4	1E4 I.F. TRANS. (SEE NOTE 1)
C5	22-825 1MFD.	1	C24	22-358 50K MFD.	1	R5	22-668 150M OHM	1	A5	1E5 I.F. TRANS. (SEE NOTE 1)
C6	22-826 22MFD.	1	C25	22-358 50K MFD.	1	R6	22-668 150M OHM	1	A6	1E6 I.F. TRANS. (SEE NOTE 1)
C7	22-827 1MFD.	1	C26	22-358 50K MFD.	1	R7	22-668 150M OHM	1	A7	1E7 I.F. TRANS. (SEE NOTE 1)
C8	22-828 22MFD.	1	C27	22-358 50K MFD.	1	R8	22-668 150M OHM	1	A8	1E8 I.F. TRANS. (SEE NOTE 1)
C9	22-829 1MFD.	1	C28	22-358 50K MFD.	1	R9	22-668 150M OHM	1	A9	1E9 I.F. TRANS. (SEE NOTE 1)
C10	22-830 22MFD.	1	C29	22-358 50K MFD.	1	R10	22-668 150M OHM	1	A10	1E10 I.F. TRANS. (SEE NOTE 1)
C11	22-831 1MFD.	1	C30	22-358 50K MFD.	1	R11	22-668 150M OHM	1	A11	1E11 I.F. TRANS. (SEE NOTE 1)
C12	22-832 22MFD.	1	C31	22-358 50K MFD.	1	R12	22-668 150M OHM	1	A12	1E12 I.F. TRANS. (SEE NOTE 1)
C13	22-833 1MFD.	1	C32	22-358 50K MFD.	1	R13	22-668 150M OHM	1	A13	1E13 I.F. TRANS. (SEE NOTE 1)
C14	22-834 22MFD.	1	C33	22-358 50K MFD.	1	R14	22-668 150M OHM	1	A14	1E14 I.F. TRANS. (SEE NOTE 1)
C15	22-835 1MFD.	1	C34	22-358 50K MFD.	1	R15	22-668 150M OHM	1	A15	1E15 I.F. TRANS. (SEE NOTE 1)
C16	22-836 22MFD.	1	C35	22-358 50K MFD.	1	R16	22-668 150M OHM	1	A16	1E16 I.F. TRANS. (SEE NOTE 1)
C17	22-837 1MFD.	1	C36	22-358 50K MFD.	1	R17	22-668 150M OHM	1	A17	1E17 I.F. TRANS. (SEE NOTE 1)
C18	22-838 22MFD.	1	C37	22-358 50K MFD.	1	R18	22-668 150M OHM	1	A18	1E18 I.F. TRANS. (SEE NOTE 1)
C19	22-839 1MFD.	1	C38	22-358 50K MFD.	1	R19	22-668 150M OHM	1	A19	1E19 I.F. TRANS. (SEE NOTE 1)
C20	22-840 22MFD.	1	C39	22-358 50K MFD.	1	R20	22-668 150M OHM	1	A20	1E20 I.F. TRANS. (SEE NOTE 1)
C21	22-841 1MFD.	1	C40	22-358 50K MFD.	1	R21	22-668 150M OHM	1	A21	1E21 I.F. TRANS. (SEE NOTE 1)
C22	22-842 22MFD.	1	C41	22-358 50K MFD.	1	R22	22-668 150M OHM	1	A22	1E22 I.F. TRANS. (SEE NOTE 1)
C23	22-843 1MFD.	1	C42	22-358 50K MFD.	1	R23	22-668 150M OHM	1	A23	1E23 I.F. TRANS. (SEE NOTE 1)
C24	22-844 22MFD.	1	C43	22-358 50K MFD.	1	R24	22-668 150M OHM	1	A24	1E24 I.F. TRANS. (SEE NOTE 1)
C25	22-845 1MFD.	1	C44	22-358 50K MFD.	1	R25	22-668 150M OHM	1	A25	1E25 I.F. TRANS. (SEE NOTE 1)
C26	22-846 22MFD.	1	C45	22-358 50K MFD.	1	R26	22-668 150M OHM	1	A26	1E26 I.F. TRANS. (SEE NOTE 1)
C27	22-847 1MFD.	1	C46	22-358 50K MFD.	1	R27	22-668 150M OHM	1	A27	1E27 I.F. TRANS. (SEE NOTE 1)
C28	22-848 22MFD.	1	C47	22-358 50K MFD.	1	R28	22-668 150M OHM	1	A28	1E28 I.F. TRANS. (SEE NOTE 1)
C29	22-849 1MFD.	1	C48	22-358 50K MFD.	1	R29	22-668 150M OHM	1	A29	1E29 I.F. TRANS. (SEE NOTE 1)
C30	22-850 22MFD.	1	C49	22-358 50K MFD.	1	R30	22-668 150M OHM	1	A30	1E30 I.F. TRANS. (SEE NOTE 1)
C31	22-851 1MFD.	1	C50	22-358 50K MFD.	1	R31	22-668 150M OHM	1	A31	1E31 I.F. TRANS. (SEE NOTE 1)
C32	22-852 22MFD.	1	C51	22-358 50K MFD.	1	R32	22-668 150M OHM	1	A32	1E32 I.F. TRANS. (SEE NOTE 1)
C33	22-853 1MFD.	1	C52	22-358 50K MFD.	1	R33	22-668 150M OHM	1	A33	1E33 I.F. TRANS. (SEE NOTE 1)
C34	22-854 22MFD.	1	C53	22-358 50K MFD.	1	R34	22-668 150M OHM	1	A34	1E34 I.F. TRANS. (SEE NOTE 1)
C35	22-855 1MFD.	1	C54	22-358 50K MFD.	1	R35	22-668 150M OHM	1	A35	1E35 I.F. TRANS. (SEE NOTE 1)
C36	22-856 22MFD.	1	C55	22-358 50K MFD.	1	R36	22-668 150M OHM	1	A36	1E36 I.F. TRANS. (SEE NOTE 1)
C37	22-857 1MFD.	1	C56	22-358 50K MFD.	1	R37	22-668 150M OHM	1	A37	1E37 I.F. TRANS. (SEE NOTE 1)
C38	22-858 22MFD.	1	C57	22-358 50K MFD.	1	R38	22-668 150M OHM	1	A38	1E38 I.F. TRANS. (SEE NOTE 1)
C39	22-859 1MFD.	1	C58	22-358 50K MFD.	1	R39	22-668 150M OHM	1	A39	1E39 I.F. TRANS. (SEE NOTE 1)
C40	22-860 22MFD.	1	C59	22-358 50K MFD.	1	R40	22-668 150M OHM	1	A40	1E40 I.F. TRANS. (SEE NOTE 1)
C41	22-861 1MFD.	1	C60	22-358 50K MFD.	1	R41	22-668 150M OHM	1	A41	1E41 I.F. TRANS. (SEE NOTE 1)
C42	22-862 22MFD.	1	C61	22-358 50K MFD.	1	R42	22-668 150M OHM	1	A42	1E42 I.F. TRANS. (SEE NOTE 1)
C43	22-863 1MFD.	1	C62	22-358 50K MFD.	1	R43	22-668 150M OHM	1	A43	1E43 I.F. TRANS. (SEE NOTE 1)
C44	22-864 22MFD.	1	C63	22-358 50K MFD.	1	R44	22-668 150M OHM	1	A44	1E44 I.F. TRANS. (SEE NOTE 1)
C45	22-865 1MFD.	1	C64	22-358 50K MFD.	1	R45	22-668 150M OHM	1	A45	1E45 I.F. TRANS. (SEE NOTE 1)
C46	22-866 22MFD.	1	C65	22-358 50K MFD.	1	R46	22-668 150M OHM	1	A46	1E46 I.F. TRANS. (SEE NOTE 1)
C47	22-867 1MFD.	1	C66	22-358 50K MFD.	1	R47	22-668 150M OHM	1	A47	1E47 I.F. TRANS. (SEE NOTE 1)
C48	22-868 22MFD.	1	C67	22-358 50K MFD.	1	R48	22-668 150M OHM	1	A48	1E48 I.F. TRANS. (SEE NOTE 1)
C49	22-869 1MFD.	1	C68	22-358 50K MFD.	1	R49	22-668 150M OHM	1	A49	1E49 I.F. TRANS. (SEE NOTE 1)
C50	22-870 22MFD.	1	C69	22-358 50K MFD.	1	R50	22-668 150M OHM	1	A50	1E50 I.F. TRANS. (SEE NOTE 1)
C51	22-871 1MFD.	1	C70	22-358 50K MFD.	1	R51	22-668 150M OHM	1	A51	1E51 I.F. TRANS. (SEE NOTE 1)
C52	22-872 22MFD.	1	C71	22-358 50K MFD.	1	R52	22-668 150M OHM	1	A52	1E52 I.F. TRANS. (SEE NOTE 1)
C53	22-873 1MFD.	1	C72	22-358 50K MFD.	1	R53	22-668 150M OHM	1	A53	1E53 I.F. TRANS. (SEE NOTE 1)
C54	22-874 22MFD.	1	C73	22-358 50K MFD.	1	R54	22-668 150M OHM	1	A54	1E54 I.F. TRANS. (SEE NOTE 1)
C55	22-875 1MFD.	1	C74	22-358 50K MFD.	1	R55	22-668 150M OHM	1	A55	1E55 I.F. TRANS. (SEE NOTE 1)
C56	22-876 22MFD.	1	C75	22-358 50K MFD.	1	R56	22-668 150M OHM	1	A56	1E56 I.F. TRANS. (SEE NOTE 1)
C57	22-877 1MFD.	1	C76	22-358 50K MFD.	1	R57	22-668 150M OHM	1	A57	1E57 I.F. TRANS. (SEE NOTE 1)
C58	22-878 22MFD.	1	C77	22-358 50K MFD.	1	R58	22-668 150M OHM	1	A58	1E58 I.F. TRANS. (SEE NOTE 1)
C59	22-879 1MFD.	1	C78	22-358 50K MFD.	1	R59	22-668 150M OHM	1	A59	1E59 I.F. TRANS. (SEE NOTE 1)
C60	22-880 22MFD.	1	C79	22-358 50K MFD.	1	R60	22-668 150M OHM	1	A60	1E60 I.F. TRANS. (SEE NOTE 1)
C61	22-881 1MFD.	1	C80	22-358 50K MFD.	1	R61	22-668 150M OHM	1	A61	1E61 I.F. TRANS. (SEE NOTE 1)
C62	22-882 22MFD.	1	C81	22-358 50K MFD.	1	R62	22-668 150M OHM	1	A62	1E62 I.F. TRANS. (SEE NOTE 1)
C63	22-883 1MFD.	1	C82	22-358 50K MFD.	1	R63	22-668 150M OHM	1	A63	1E63 I.F. TRANS. (SEE NOTE 1)
C64	22-884 22MFD.	1	C83	22-358 50K MFD.	1	R64	22-668 150M OHM	1	A64	1E64 I.F. TRANS. (SEE NOTE 1)
C65	22-885 1MFD.	1	C84	22-358 50K MFD.	1	R65	22-668 150M OHM	1	A65	1E65 I.F. TRANS. (SEE NOTE 1)
C66	22-886 22MFD.	1	C85	22-358 50K MFD.	1	R66	22-668 150M OHM	1	A66	1E66 I.F. TRANS. (SEE NOTE 1)
C67	22-887 1MFD.	1	C86	22-358 50K MFD.	1	R67	22-668 150M OHM	1	A67	1E67 I.F. TRANS. (SEE NOTE 1)
C68	22-888 22MFD.	1	C87	22-358 50K MFD.	1	R68	22-668 150M OHM	1	A68	1E68 I.F. TRANS. (SEE NOTE 1)
C69	22-889 1MFD.	1	C88	22-358 50K MFD.	1	R69	22-668 150M OHM	1	A69	1E69 I.F. TRANS. (SEE NOTE 1)
C70	22-890 22MFD.	1	C89	22-358 50K MFD.	1	R70	22-668 150M OHM	1	A70	1E70 I.F. TRANS. (SEE NOTE 1)
C71	22-891 1MFD.	1	C90	22-358 50K MFD.	1	R71	22-668 150M OHM	1	A71	1E71 I.F. TRANS. (SEE NOTE 1)
C72	22-892 22MFD.	1	C91	22-358 50K MFD.	1	R72	22-668 150M OHM	1	A72	1E72 I.F. TRANS. (SEE NOTE 1)
C73	22-893 1MFD.	1	C92	22-358 50K MFD.	1	R73	22-668 150M OHM	1	A73	1E73 I.F. TRANS. (SEE NOTE 1)
C74	22-894 22MFD.	1	C93	22-358 50K MFD.	1	R74	22-668 150M OHM	1	A74	1E74 I.F. TRANS. (SEE NOTE 1)
C75	22-895 1MFD.	1	C94	22-358 50K MFD.	1	R75	22-668 150M OHM	1	A75	1E75 I.F. TRANS. (SEE NOTE 1)
C76	22-896 22MFD.	1	C95	22-358 50K MFD.	1	R76	22-668 150M OHM	1	A76	1E76 I.F. TRANS. (SEE NOTE 1)
C77	22-897 1MFD.	1	C96	22-358 50K MFD.	1	R77	22-668 150M OHM	1	A77	1E77 I.F. TRANS. (SEE NOTE 1)
C78	22-898 22MFD.	1	C97	22-358 50K MFD.	1	R78	22-668 150M OHM	1	A78	1E78 I.F. TRANS. (SEE NOTE 1)
C79	22-899 1MFD.	1	C98	22-358 50K MFD.	1	R79	22-668 150M OHM	1	A79	1E79 I.F. TRANS. (SEE NOTE 1)
C80	22-900 22MFD.	1	C99	22-358 50K MFD.	1	R80	22-668 150M OHM	1	A80	1E80 I.F. TRANS. (SEE NOTE 1)
C81	22-901 1MFD.	1	C100	22-358 50K MFD.	1	R81	22-668 150M OHM	1	A81	1E81 I.F. TRANS. (SEE NOTE 1)
C82	22-902 22MFD.	1	C101	22-358 50K MFD.	1	R82	22-668 150M OHM	1	A82	1E82 I.F. TRANS. (SEE NOTE 1)
C83	22-903 1MFD.	1	C102	22-358 50K MFD.	1	R83	22-668 150M OHM	1	A83	1E83 I.F. TRANS. (SEE NOTE 1)
C84	22-904 22MFD.	1	C103	22-358 50K MFD.	1	R84	22-668 150M OHM	1	A84	1E84 I.F. TRANS. (SEE NOTE 1)
C85	22-905 1MFD.	1	C104	22-358 50K M						