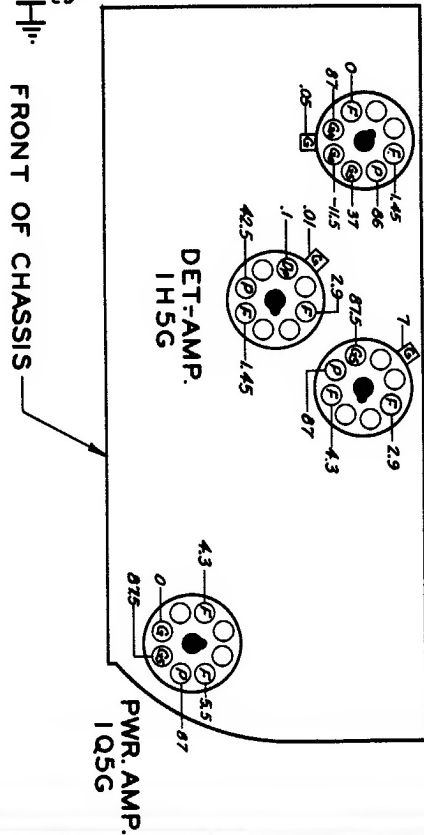
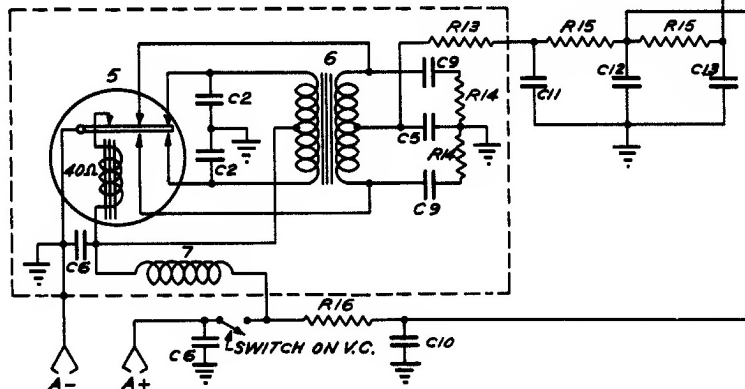


I.F. FREQUENCY 455 KC.
 4 TUBE SUPERHETERODYNE
 CHASSIS N^o 4A01 & 4A03-6V-SINGLE BAND
 ZENITH RADIO CORPORATION
 MODELS: 4B515, 4B536



CONVERTER
 1A7G
 I.F.
 IN5G



DIAG. N ^o	PART N ^o	DESCRIPTION	DIAG. N ^o	PART N ^o	DESCRIPTION	DIAG. N ^o	PART N ^o	DESCRIPTION
C1	22-695	TWO GANG VARIABLE	R2	63-595	100 M OHM	A	57681	ANTENNA COIL ASSEMBLY
C2	22-826	.01 MFD.	R3	63-594	68 M OHM	B	56381	OSCILLATOR COIL ASSEM.
C3	22-829	.05 MFD.	R4	63-583	1000 OHM	C	95-589	1 st I.F. TRANS.
C4	22-162	.0001 MFD.	R5	63-296	220 M OHM	D	95-590	2 ND I.F. TRANS.
C5	22-828	.05 MFD.	R6	63-669	3.9 MEG OHM	E	190-17	VIBRATOR
C6	22-199	.5 MFD.	R7	63-593	47 M OHM	F	95-635	POWER TRANSFORMER
C7	22-243	.01 MFD.	R8	63-1079	VOLUME CONTROL	G	55043	CHOKE ASSEMBLY
C8	22-448	.004 MFD.	R9	63-976	15 MEG OHM			
C9	22-966	.04 MFD.	R10	63-271	1 MEG OHM			
C10	22-961	500 MFD. ELECTROLYTIC	R11	63-600	2.2 MEG OHM			
C11		15 MFD. ELECTROLYTIC	R12	63-1060	900 OHM WIREWOUND			
C12	22-742	15 MFD. ELECTROLYTIC	R13	63-577	100 OHM			
C13		10 MFD. ELECTROLYTIC	R14	63-697	100 OHM			
			R15	63-605	1000 OHM			
			R16	63-1061	7 OHM			
R1	63-597	470 M OHM						

A 1st I.F. TRANS. PRI.
 B 1st I.F. TRANS. SEC.
 C 2ND I.F. TRANS. PRI.
 D 2ND I.F. TRANS. SEC.
 E B'DCAST OSC. (ON GANG)
 F ANT. B'DCAST (ON GANG)
 G