

All voltages measured with a 1000 ohm per volt meter from chassis to socket contacts.

Voltage readings are all positive D.C. unless otherwise indicated.

Antenna disconnected volume control full on.

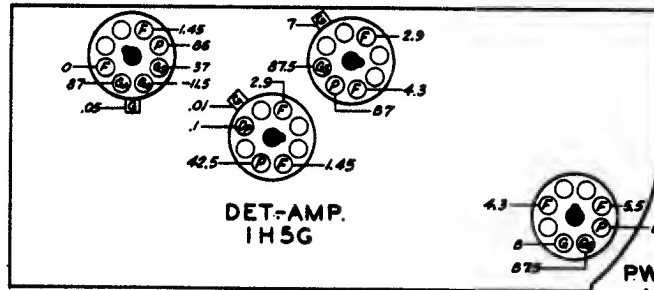
Battery voltage 6 volt.

Battery consumption—.5 ampere.

Power Output—.37 watts.

CONVERTER
1A7G

I.F.
1N5G



I.F. FREQUENCY 455 KC

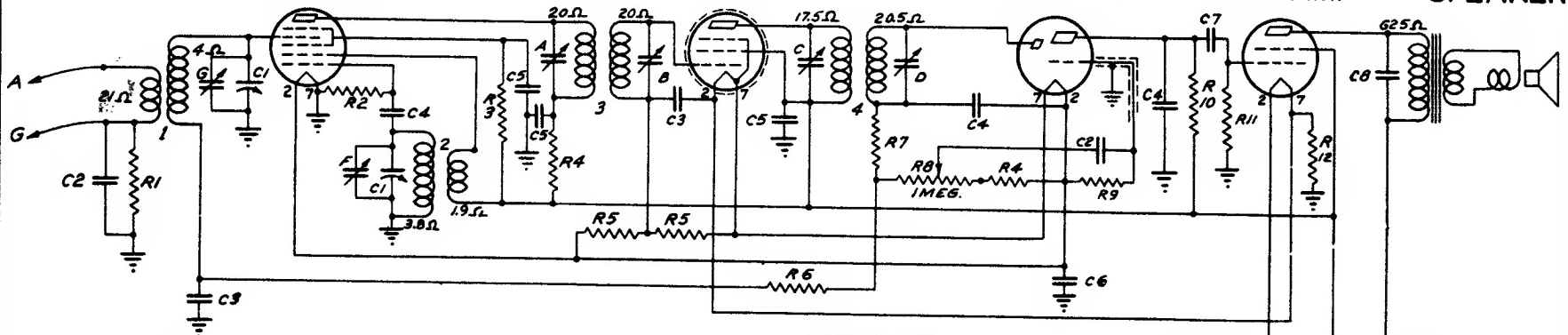
1A7G
CONVERTER

1N5G
I.F.

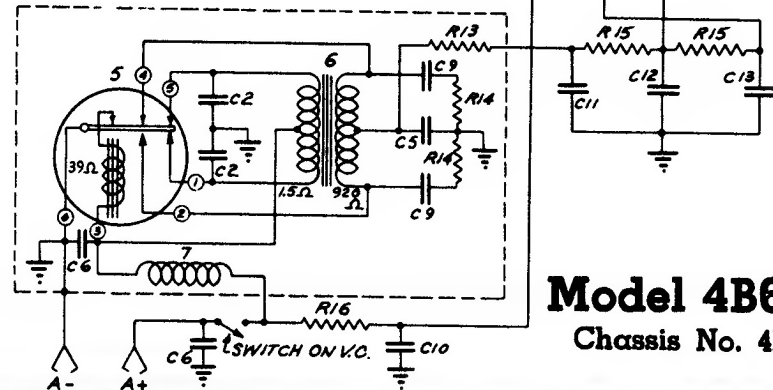
1H5G
DET.-AMP.

1Q5G
PWR. AMP.

SPEAKER



DIAG. N ^o	PART N ^o	DESCRIPTION	DIAG. N ^o	PART N ^o	DESCRIPTION	
C1	22-695	TWO GANG VARIABLE	R2	63-595	108 M OHM	1/4 W.
C2	22-826	.01 MFD.	R3	63-594	68M OHM	1/4 W.
C3	22-829	.05 MFD.	R4	63-583	1000 OHM	1/4 W.
C4	22-162	.0001 MFD.	R5	63-296	220 M OHM	1/4 W.
C5	22-828	.05 MFD.	R6	63-669	3.9 MEGOHM	1/4 W.
C6	22-199	.5 MFD.	R7	63-593	47M OHM	1/4 W.
C7	22-243	.01 MFD.	R8	63-1079	VOLUME CONTROL	
C8	22-448	.004 MFD.	R9	63-976	15 MEGOHM	1/4 W.
C9	22-966	.04 MFD.	R10	63-271	1 MEGOHM	1/4 W.
C10	22-961	500MFD. ELECTROLYTIC	R11	63-600	2.2 MEGOHM	1/4 W.
C11		15 MFD.	R12	63-1060	90 OHM WIREWOUND	1 W.
C12	22-742	15 MFD.	R13	63-577	100 OHM	1/4 W.
C13		18 MFD.	R14	63-697	100 OHM	1/4 W.
			R15	63-605	1000 OHM	1/4 W.
R1	63-597	470 M OHM	R16	63-1061	7 OHM	1/2 W.



Model 4B639

Chassis No. 4B04