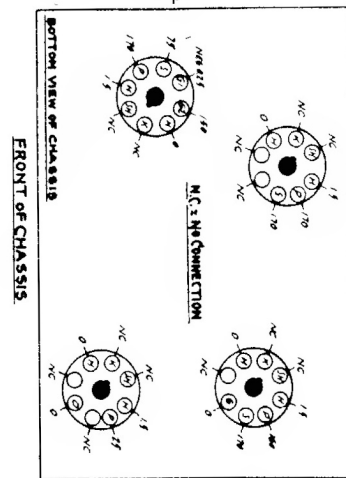
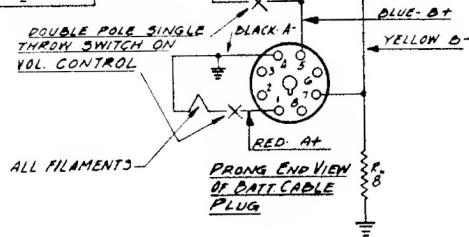


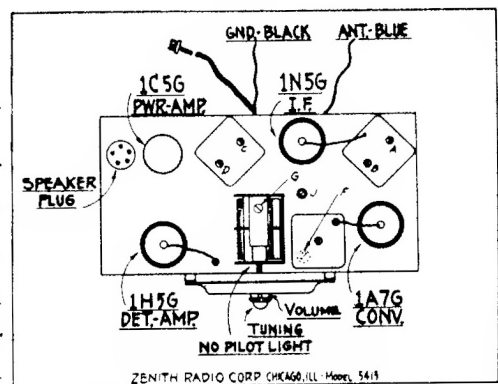
DIAG. NO.	PART NO.	DESCRIPTION	DIAG. NO.	PART NO.	DESCRIPTION
C-1	22-650	TWO GANG VARIABLE			
C-2	22-250	.05 MFD	200V	1	5-5050 ANTENNA COIL ASSEMBLY
C-3	22-199	5 MFD	200V	2	5-5100 ANT. COIL & SHIELD ASSEM
C-4	22-358	.002 MFD	600V	2	5-4662 OSCILLATOR COIL ASSEM
C-5	22-212	.25 MFD	400V	3	95-479 1ST. I.F. TRANSFORMER
C-6	22-162	.0001 MFD	600V	4	95-480 2ND. I.F. TRANSFORMER
C-7	22-327	.02 MFD	400V	5	SPEAKER TRANS. (ON SPEAKER)
C-8	22-188	.02 MFD	400V		
C-9	22-684	8 MFD ELECTROLYTIC	180V		
C-10	22-492	.002 MFD	600V	A	1ST. I.F. TRANS. PRI.
				B	1ST. I.F. TRANS. SEC.
				C	2ND. I.F. TRANS. PRI.
				D	2ND. I.F. TRANS. SEC.
R-1	63-325	150 M OHM	1/4W	F	22-305 BROADCAST OSCILLATOR
R-2	63-594	68 M OHM	1/4W	H	ANTENNA BROADCAST
R-3	63-638	3600 OHM	1/4W	J	22-519 OSCILLATOR PADDER
R-4	63-271	1 MEG OHM	1/4W		
R-5	63-658	390 M OHM	1/4W		
R-6	63-548	1 MEG OHM VOL. CONTROL	1/4W		
R-7	63-600	2.2 MEG OHM	1/4W		
R-8	63-238	1000 OHM	1/4W		



Model 4K329  
 I.F. FREQUENCY 456 K.C.  
 4 TUBE BATTERY SUPERHETERODYNE  
 CHASSIS NO 5413  
 ZENITH RADIO CORPORATION  
 CHICAGO, ILL

## ALIGNMENT PROCEDURE

Operation	Connect Test Oscillator to—	Dummy Antenna	Set Test Osc. to	Band	Set Dial At	Adjust Trimmers	Purpose
1	1st Det. Grid	1/2 Mfd.	456	Br'dc't	600	ABCD	I. F. Algm't.
2	Rec. Ant. Lead	200 Mmfd.	1500	"	1500	F	Set Osc. to Scale
3	" " "	200 Mmfd.	1500	"	1500	G	Algm't of Ant.
4	" " "	200 Mmfd.	600	"	600	J	Rock gang & adj. for max. output
5	" " "	200 Mmfd.	1500	"	1500	FG	Rpt. 3 & 4



Location of tubes and trimmers

ZENITH RADIO CORP. CHICAGO, ILL. Model 5413