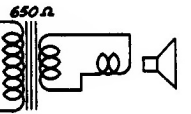
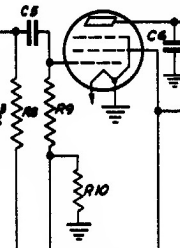


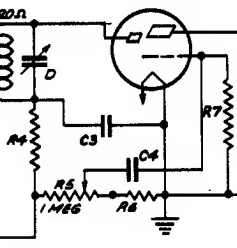
SPEAKER



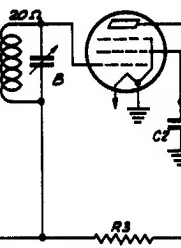
**IC5G
PWR. AMP.**



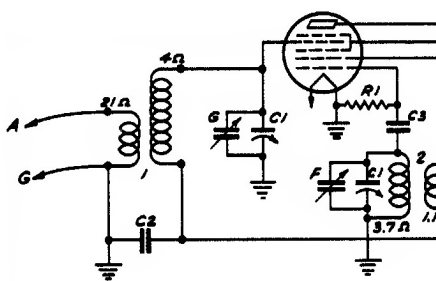
**IH5G
DET.-AMP.**



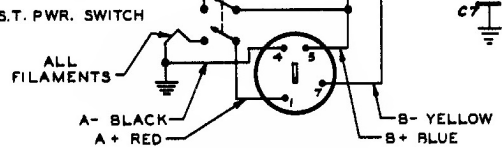
**IN5G
I.F.**



**IA7G
CONVERTER**



DIAG. No.	PART No.	DESCRIPTION	DIAG. No.	PART No.	DESCRIPTION	DIAG. No.	PART No.	DESCRIPTION
C1	22-655	220 OHMS VARIABLE	R-4	63-593	47M OHM	4	95-590	1/2" I.F. TRANS. PRI.
C2	25-423	0.001 MFD.	R-5	63-592	1000 OHM	4		1/2" I.F. TRANS. SEC.
C3	25-423	0.001 MFD.	R-6	63-591	1000 OHM	4		250 I.F. TRANS. PRI.
C4	25-423	0.001 MFD.	R-7	63-578	1/2 MEG OHM	4		250 I.F. TRANS. SEC.
C5	22-243	0.01 MFD.	R-8	63-571	5.2 MEG OHM	4		250 I.F. TRANS. SEC.
C6	22-448	0.04 MFD.	R-9	63-560	1000 OHM	4		80K57 OSC. (OH 5440)
C7	22-664	0.01 MFD. ELECTROLYTIC	R-10	63-559	1000 OHM	4		40K OSC. (OH 5440)
R1	63-554	150M OHM	1	20-308	AUTOTUNING COIL	0		
R2	63-534	68M OHM	1	5-7215	OSCILLATOR COIL	0		
R3	63-669	5.9 MEG OHM	1	95-569	1/2" I.F. TRANS. ASSEMB.	0		



I.F. FREQUENCY 455 KC.
4 TUBE SUPERHETERODYNE
CHASSIS No 4A02 & 4A04-1 1/2 V.-SINGLE BAND
ZENITH RADIO CORPORATION
MODELS: 4K515, 4K535

All voltages measured with a 1000 ohm per volt meter from chassis to socket contacts using a fresh Z28 battery pack.

Antenna disconnected — vol. tune control full on.

