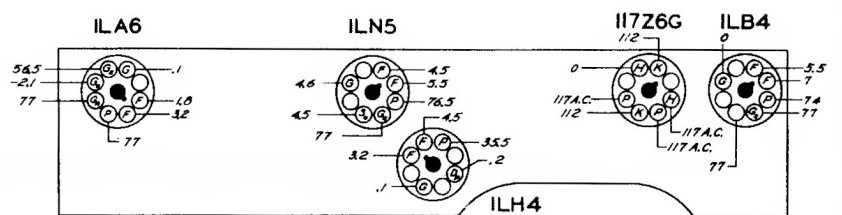
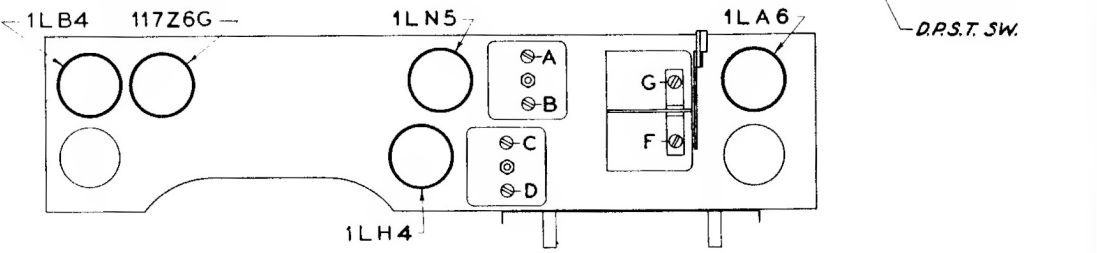
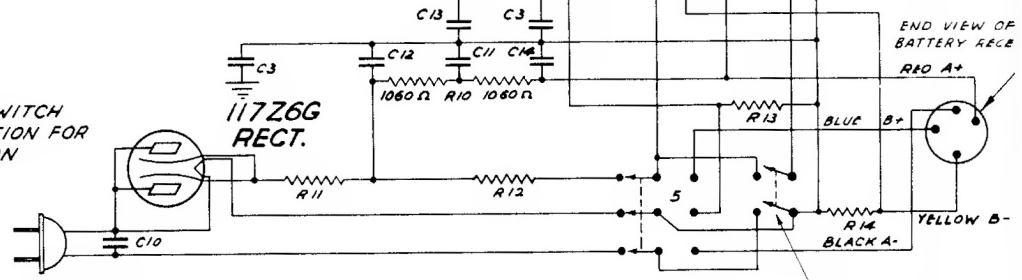


110 VOLT A.C.-BATTERY PACK  
 UNIVERSAL PORTABLE  
 I.F. FREQUENCY 455 KC.  
 5 TUBE SUPERHETERODYNE  
 CHASSIS № 5A01  
 ZENITH RADIO CORPORATION  
 MODELS: 5G500, 5G501

CHANGEOVER SWITCH  
 SHOWN IN POSITION FOR  
 A.C. OPERATION



VOLTAGES MEASURED FROM SOCKET TERMINALS TO A.C. LINE AT CHANGEOVER SWITCH.

All voltages measured from point indicated to chassis using 20000 ohm per volt meter.

Antenna disconnected — volume control at minimum and condenser plates in full mesh.

Line voltage — 117v.

COMP.	PART NO.	DESCRIPTION	QTY.	PART NO.	DESCRIPTION	QTY.
C1	22-02K	TUNING GAUGE VARIABLE	1	63-773	180 M OHM	1/4 W.
C2	22-829	.05 MFD.	2	63-590	47 M OHM	1/4 W.
C3	22-827	1 MFD.	1	63-713	47 M OHM	1/4 W.
C4	22-988	20 MFD.	1	63-722	2.2 MEG OHM	1/4 W.
C5	22-162	.0001 MFD.	1	63-1121	VOLUME CONTROL	1/4 W.
C6	22-492	.0001 MFD.	1	63-587	4700 OHM	1/4 W.
C7	22-470	.00015 MFD.	1	63-1083	15 MEG OHM	1/4 W.
C8	22-243	.01 MFD.	1	63-1087	870 OHM WIREWOUND	1/4 W.
C9	22-449	.004 MFD.	1	63-271	1 MEG OHM	1/4 W.
C10	22-869	.05 MFD.	1	63-1120	2-SECTION CAPACITOR	1/4 W.
C11	22-1026	20 MFD. ELECTROLYTIC	1	63-1096	40 OHM WIREWOUND	1/4 W.
C12	22-1026	40 MFD.	1	63-439	2700 OHM	1/4 W.
C13	22-1027	20 MFD.	1	63-1099	33 OHM WIREWOUND	1/4 W.
C14	22-1027	20 MFD.	1	63-783	180 OHM	1/4 W.