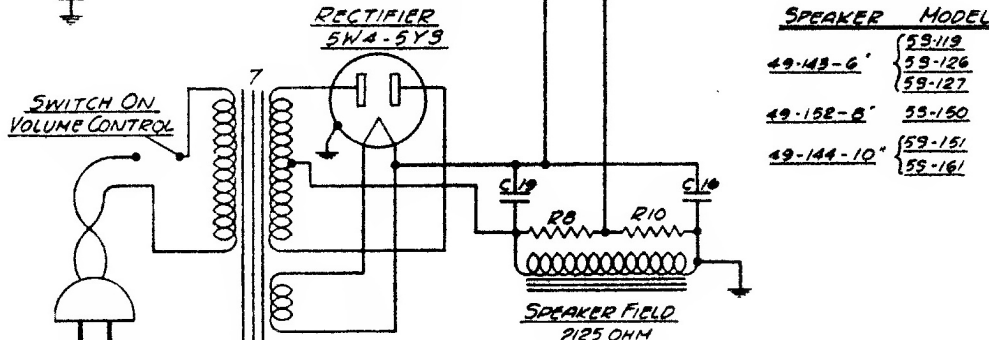


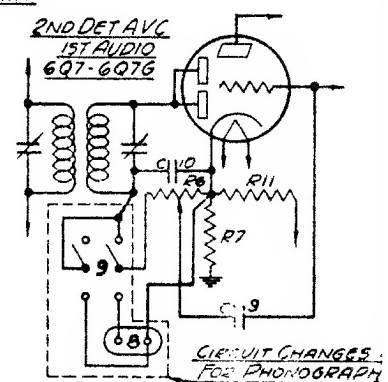
DIAG N <sup>o</sup>	PART N <sup>o</sup>	DESCRIPTION	DIAG N <sup>o</sup>	PART N <sup>o</sup>	DESCRIPTION
C1	22-305	2-3.5MFD TRIMMER	1	20-133	WAVE TRAP ASSEM
C2	250	0.5 MFD	2	20-134	ANTENNA CHOK
C3	212	0.5 MFD	3	20-362	ANTENNA COIL ASSEM
C4	384	200-550MFD PADD	4	85-89	BAND SELECTOR SWITCH
C5	485	00.5 MFD	5	95-349	1ST I.F. TRANSFORMER
C6	127	25 MFD	6	95-550	2ND I.F. TRANSFORMER
C7	486	00.2 MFD	7	95-351	POWER TRANS 15Y 50-000LX
C8	188	0.2 MFD	8	95-361	POWER TRANS 25C-150LX VOL
C9	162	0.001 MFD	9	44-7	PHONO JACK
C10	147	0.005 MFD	10	85-39	PHONO SWITCH
C11	435	0.2 MFD	11	5-4363	OXC COIL ASSEM
C12	198	2 MFD			
C13	494	1 MFD			
C14	82	0.01 MFD			
C15	496	1/4 MFD ELEC COND WRT 250V			
C16	506	2-35MFD TRIMMER COND			
C17	408	2-GANG VARIABLE COND.			
C18	482	1 MFD			
C19	505	12 MFD ELEC COND WRT 325V			
C20	170	1 MFD			
C21	487	0.5 MFD (BRAD LEAD) 400V			
R1	85-362	400 OHMS			
R2	280	49 M OHMS			
R3	373	17 M OHMS			
R4	283	30 M OHMS			
R5	293	990 M OHMS			
R6	380	400 MOHM VOL CONT 5W			
R7	518	590 OHMS			
R8	258	490 M OHMS			
R9	321	50 M OHM TONE CONT 1/2W			
R10	378	130 M OHMS			
R11	486	80 M OHMS			



SPEAKER MODEL	MODEL
49-119-6"	5S-119
49-126-6"	5S-126
49-127-6"	5S-127
49-152-8"	5S-150
49-144-10"	5S-151
	5S-161

I.F. FREQUENCY 450 KC  
 5 TUBE SUPERHETERODYNE - 3 BANDS  
 CHASSIS No 5516

ZENITH RADIO CORPORATION  
 CHICAGO, ILLINOIS



CIRCUIT CHANGES FOR PHONOGRAPH

Models 5-S-119, 5-S-126, 5-S-127, 5-S-150, 5-S-151, 5-S-161. (Chassis No. 5516)