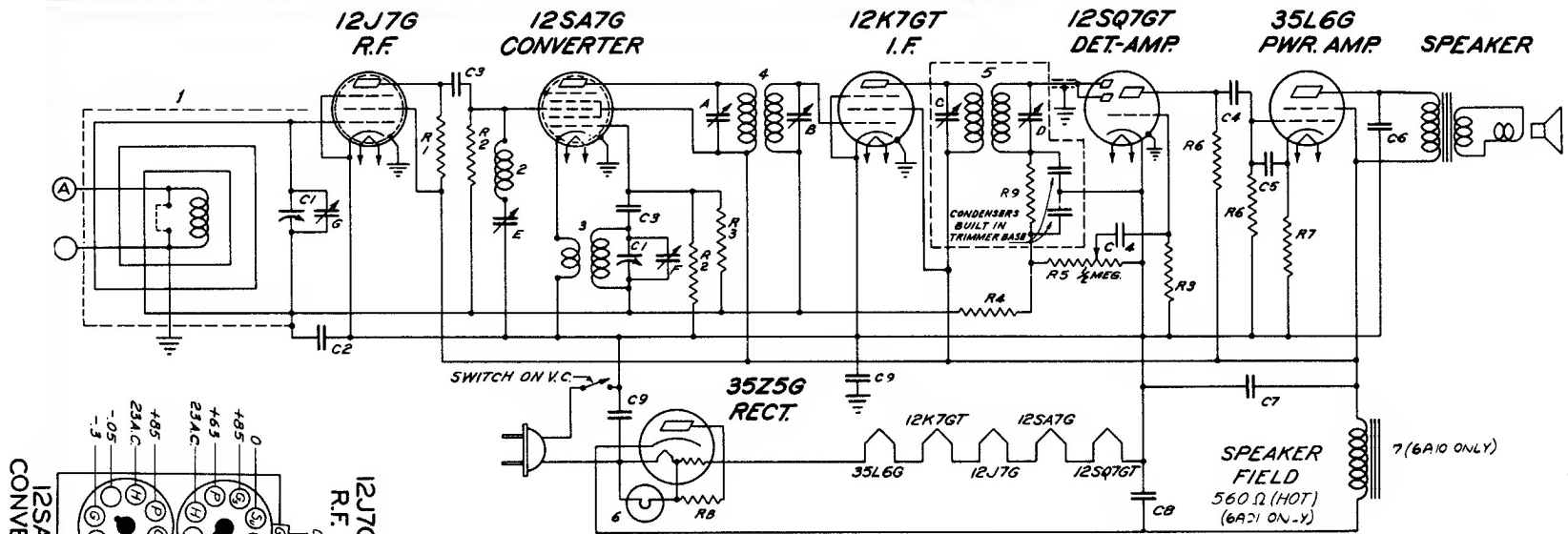
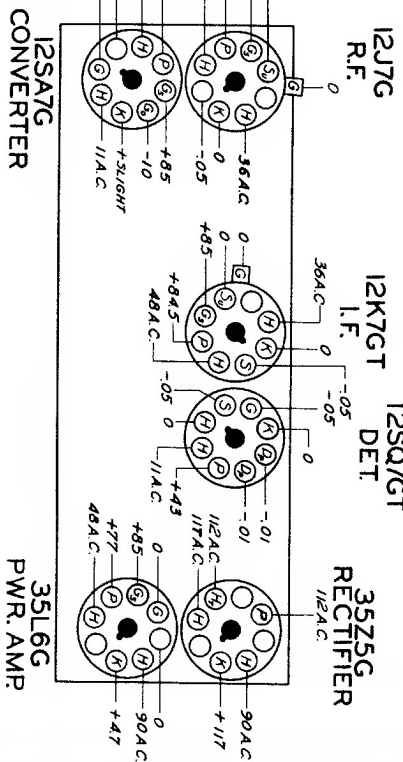


MODELS: 6D525, 6D526

I.F. FREQUENCY 455 KC.
 6 TUBE SUPERHETERODYNE
 CHASSIS No 6A01 & No 6A10 A.C.-D.C.
 ZENITH RADIO CORPORATION



PART NO.	DESCRIPTION	PART NO.	DESCRIPTION	PART NO.	DESCRIPTION
C1	22-1006 TWO-GANG VARIABLE	R2	63-591 22M OHM	3	58356 OSC. COIL ASSEMBLY
C2	22-829 .05 MFD.	R3	63-1093 15 MEGOHM	4	95-696 12I I.F. TRANS.
C3	22-162 .0001 MFD.	R4	63-600 2.2 MEGOHM	5	95-697 22II I.F. TRANS.
C4	22-243 .01 MFD.	R5	63-1112 VOLUME CONTROL	6	100-67 PILOT LIGHT 63V .15A.
C5	22-854 .0005 MFD.	R6	63-597 470M OHM	7	95-713 FILTER C-HOKE (300.0.RES)
C6	22-1049 .03 MFD.	R7	63-686 150 OHM WIREWOUND	A	12I I.F. TRANS. PRI.
C7	22-1014 20 MFD. ELECTROLYTIC	R8	63-1023 22 OHM WIREWOUND	D	12II I.F. TRANS. SEC.
C8	20 MFD. ELECTROLYTIC	R9	63-713 47M OHM	E	22II I.F. TRANS. PRI.
C9	22-1017 .05 MFD.			F	22II I.F. TRANS. SEC.
R1	63-589 10M OHM	1	WAVEMAGNET ASSEMBLY	G	22-1015 WAVE TRAP
		2	58326 WAVE TRAP COIL ASSEMBLY		BROADCAST OSC.(ON GANG)
					BROADCAST ANT.(ON GANG)



All voltages measured with a 20 M. ohm per volt meter from chassis to socket contact indicated.

