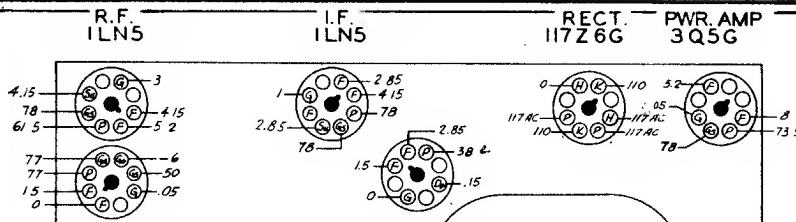


110V. A.C.-D.C.-BATTERY PACK
UNIVERSAL PORTABLE
I.F. FREQUENCY 455 KC.
6 TUBE SUPERHETERODYNE
CHASSIS No 6A19
ZENITH RADIO CORPORATION
CHICAGO, ILL.



ILA6 CONVERTER

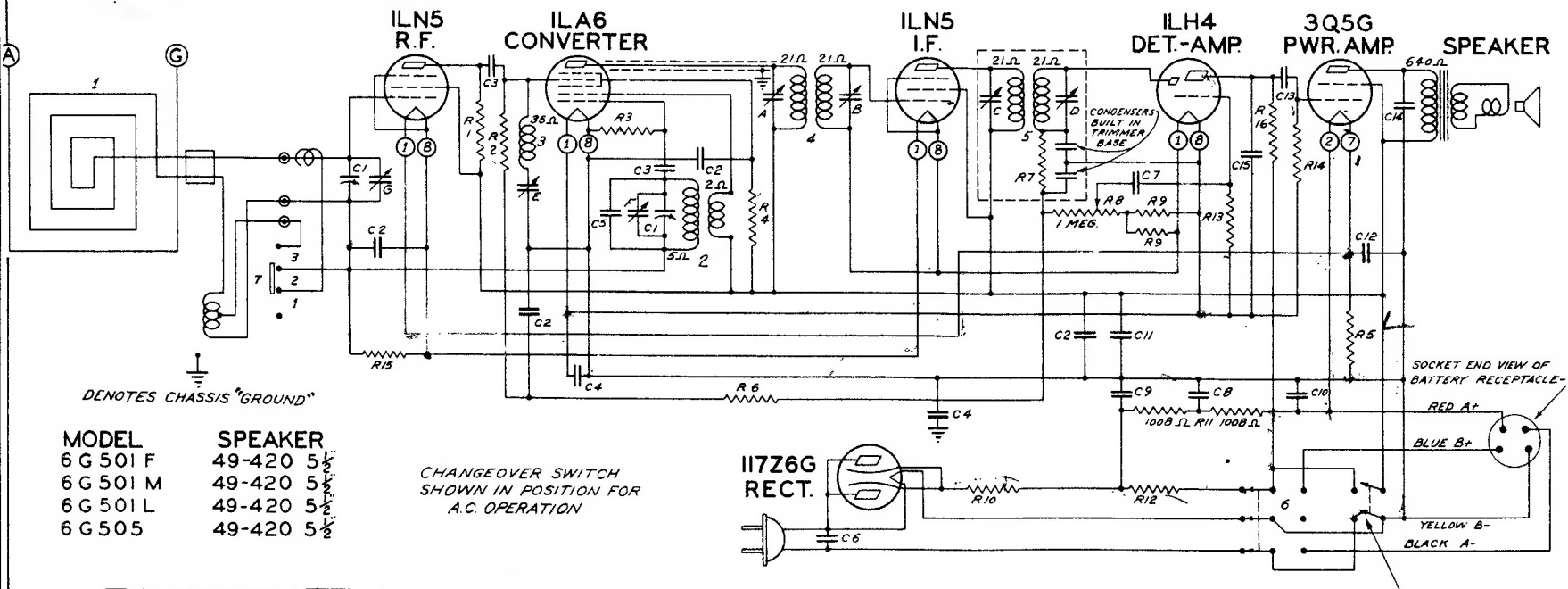
ILH4 DET.-AMP.

All voltages measured with a 20000 ohm per volt meter from Neg. B to socket contact indicated.

All voltages are positive D.C. unless marked otherwise.

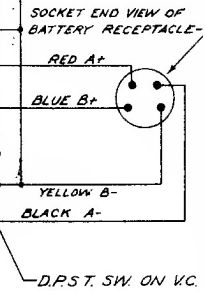
Volume control on full.
 Line voltage 117 v. A.C.

DWG. NO.	PART NO.	DESCRIPTION	DWG. NO.	PART NO.	DESCRIPTION	DWG. NO.	PART NO.	DESCRIPTION	
C1	22-1024	TWO GANG VARIABLE	R2	63-535	100 M OHM	1/2 W.	2	58374	OSCILLATOR ASSEMBLY
C2	22-829	.05 MFD	R3	63-773	180 M OHM	1/2 W.	3	58326	WAVE TRAP ASSEMBLY
C3	22-162	.0001 MFD.	R4	63-592	33 M OHM	1/2 W.	4	95-739	1ST I.F. TRANSFORMER
C4	22-827	1 MFD.	R5	63-1087	870 OHM WIREWOUND	1 W.	5	95-740	2ND I.F. TRANSFORMER
C5	22-988	20 MMFD.	R6	63-600	2.2 MEGOHM	1/2 W.	6	85-224	CHANGEOVER SWITCH
C6	22-869	.05 MFD.	R7	63-713	47 M OHM	1/2 W.	7	85-225	WAVEMAGNET SWITCH
C7	22-492	.002 MFD	R8	63-1121	VOLUME CONTROL				
C8		(20MFD. ELECTROLYTIC	R9	63-587	4700 OHM	1/2 W.			
C9	22-1026	40MFD. ELECTROLYTIC	R10	63-1096	140 OHM WIREWOUND	2 W.			
C10		40MFD. ELECTROLYTIC	R11	63-1132	2-SECTION CANDOHM				
C11	22-1159	40MFD. ELECTROLYTIC	R12	63-1156	180 OHM	1/2 W.	A		1ST I.F. TRANS. PRI
C12	22-196	.01 MFD.	R13	63-1093	15 MEGOHM	1/2 W.	B		1ST I.F. TRANS. SEC.
C13	22-448	.004 MFD.	R14	63-722	2.2 MEGOHM	1/2 W.	C		2ND I.F. TRANS. PRI.
C14	22-448	.004 MFD.	R15	63-325	150 M OHM	1/2 W.	D	22-1026	2ND I.F. TRANS. SEC.
C15	22-470	.00015 MFD.	R16	63-271	1 MEGOHM	1/2 W.	E		WAVE TRAP
							F		BROADCAST OSC. (ON GANG)
									BROADCAST ANT. (ON GANG)
R1	63-530	15M OHM	1/2 W.	I	58984	WAVEMAGNET ASSEM.			



- DENOTES CHASSIS "GROUND"
- | | |
|--------------|----------------|
| MODEL | SPEAKER |
| 6G 501 F | 49-420 5" |
| 6G 501 M | 49-420 5" |
| 6G 501 L | 49-420 5" |
| 6G 505 | 49-420 5" |

CHANGEOVER SWITCH SHOWN IN POSITION FOR A.C. OPERATION



8-13-40 FIL CRT REVISED
 8-15-40 MODEL NOS. CHANGED
 8-20-40 22-1156 WAS 22-1069
 8-29-40 22-1159 INCLUDES 22-1081 & 22-1156
 9-11-40 22-196 WAS 22-243

Models 6G501F-6G501L-6G501M

Chassis No. 6A19