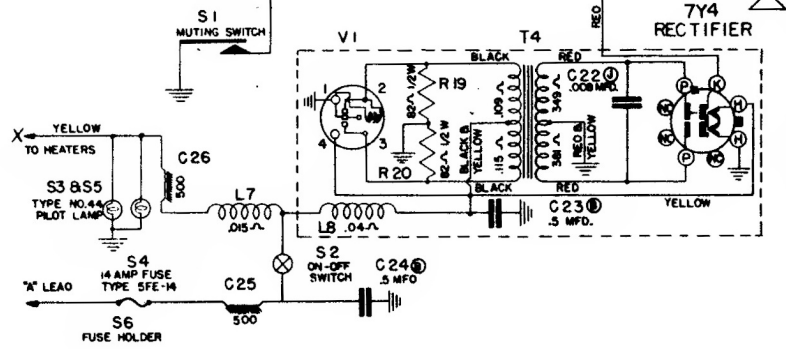


ALL CONDENSER ARE MMFD UNLESS OTHERWISE SPECIFIED

Ⓞ = 25 VOLTS    Ⓞ = 100 VOLTS    Ⓞ = 200 VOLTS  
 Ⓞ = 300 VOLTS    Ⓞ = 350 VOLTS    Ⓞ = 400 VOLTS  
 Ⓞ = 500 VOLTS    Ⓞ = 600 VOLTS    Ⓞ = 800 VOLTS  
 Ⓞ = 1000 VOLTS    Ⓞ = 1500 VOLTS    Ⓞ = 2000 VOLTS

FOR RESISTORS: K = 1000 Ω, E.G. M = MEGOHM  
 ALL RESISTORS ARE 1/8 WATT ± 20% UNLESS OTHERWISE SPECIFIED

Ⓧ DESIGNATES CHASSIS GROUND  
 ALL TUBE SOCKETS ARE BOTTOM VIEWS  
 STAGE GAINS  
 TAKEN AT ANT. SOCKET AT R.F. GRID AT 600 KC. & TAKEN AT CONV. GRID AT 265 KC.  
 DUMMY ANTENNA  
 30 MMFD. SERIES & 30MMFD. SHUNT AT ANTENNA SOCKET & 0.1 MFD. SERIES TO CONVERTER GRID.  
 BATTERY CONDITIONS  
 6.3 VOLTS AT STORAGE BATTERY TERMINALS WITH POSITIVE GROUNDING.  
 TEST CONDITIONS  
 VOLUME CONTROL SET AT MAXIMUM TONE CONTROL SET ON "HIGH" WITH NO INCOMING SIGNAL  
 VOLTAGES TO READ FROM POINT SHOWN TO CHASSIS WITH 1000 OHM PER VOLT METER



SCHEMATIC DIAGRAM FOR 6 TUBE HUDSON 6MH889

I.F. 265 KC.  
 TUNING RANGE 540 KC. TO 1600 KC.  
 ZENITH RADIO CORPORATION



**HUDSON AUTOMOBILE RECEIVER**  
 MODEL 6MH889—CHASSIS 6E89