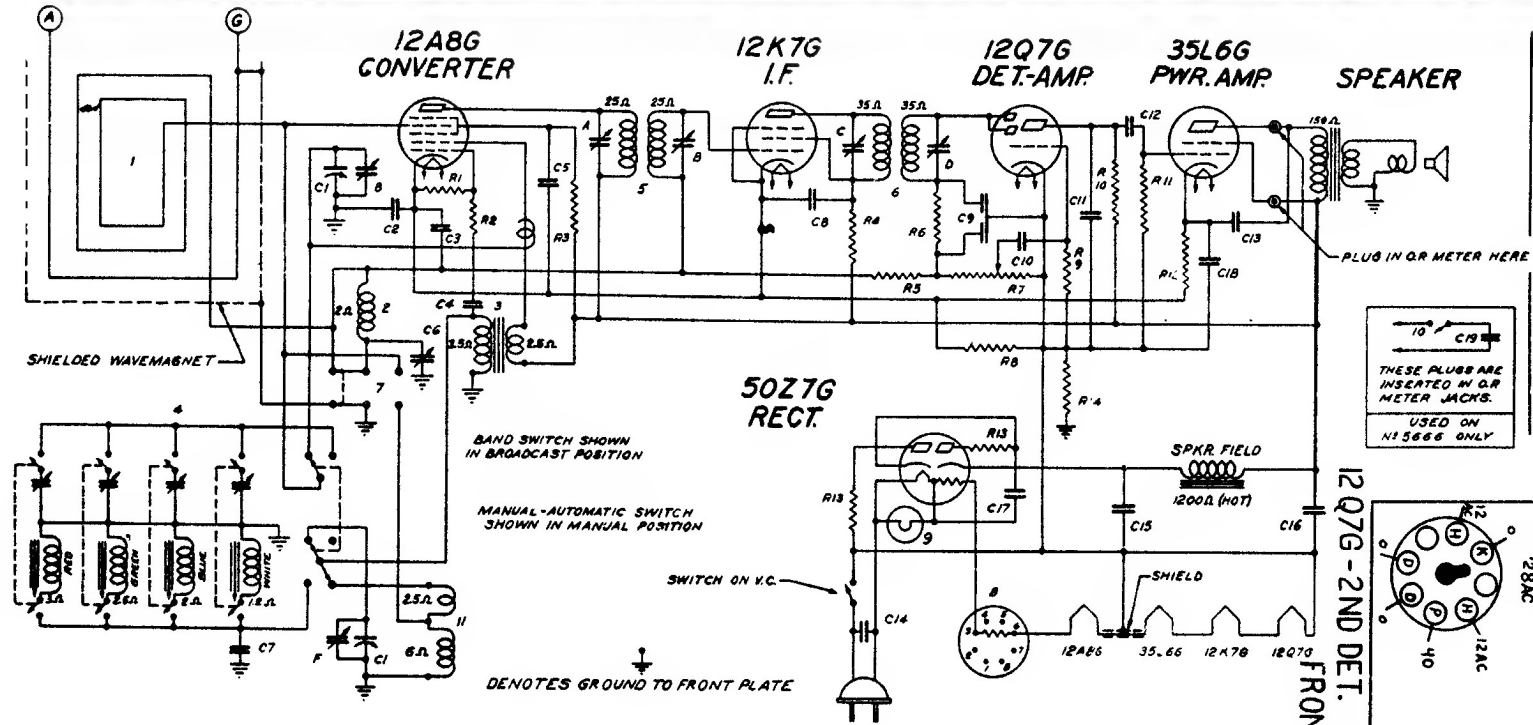
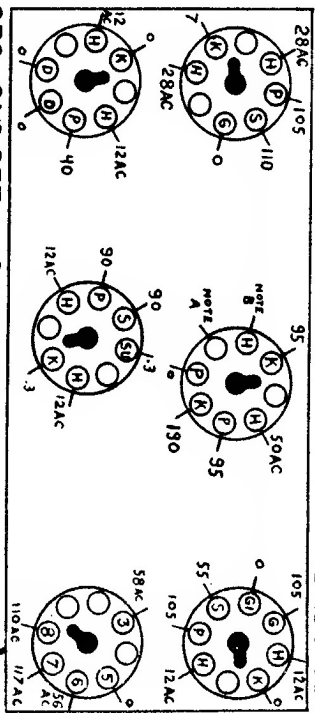


I.F. FREQUENCY 455KC
 6 TUBE SUPERHETERODYNE
 CHASSIS No. 5662 & 5666
 ZENITH RADIO CORPORATION
 CHICAGO, ILL.



DIAG. NO.	PART NO.	DESCRIPTION	DIAG. NO.	PART NO.	DESCRIPTION	DIAG. NO.	PART NO.	DESCRIPTION	DIAG. NO.	PART NO.	DESCRIPTION
C1	22-848	TWO-GANG VARIABLE									
C2	22-190	.1 MFD.	200V								
C3	22-250	.05 MFD.									
C4	22-250	100 MMFD.									
C5	22-842	.02 MFD.	400V								
C6	22-877	TRIMMER CONDENSER									
C7	22-068	COMPENSATING COND.									
C8	22-212	.05 MFD.	400V								
C9		DUAL 100 MMFD.									
C10	22-838	.005 MFD.	600V								
C11	22-833	.0005 MFD.	600V								
C12	22-837	.01 MFD.	400V								
C13	22-838	.03 MFD.	400V								
C14	22-878	.15 MFD.	400V								
C15		10 MFD ELECTROLYTIC	350V								
C16	22-840	20	250K								
C17		20	200K								
C18		20	25V								
C19	E2-948	1000 OHM									
R1	63-712	33 M OHM	1/4W								
R2	63-581	470 OHM	1/4W								
R3	63-591	22 M OHM	1/4W								
R4	63-583	1000 OHM	1/4W								
R5	63-722	22 MEGOHM	1/4W								
R6	63-593	47 M OHM	1/4W								
R7	63-1029	VOLUME CONTROL	1/4W								
R8	63-572	15 OHM	1/4W								
R9	63-976	15 MEGOHM	1/4W								
R10	63-296	220 M OHM	1/4W								
R11	63-397	470 M OHM	1/4W								
R12	63-686	150 OHM WIREWOUND	1/4W								
R13	63-1023	22 OHM WIREWOUND	1/4W								
R14	63-717	220 M OHM	1/4W								
1		WAVEMAGNET ASSEMBLY									
2	37004	ANTENNA SHUNT COIL ASSEMBLY									
3	56942	OSC. COUPLER COIL ASSEMBLY									
4	57024	AUTOMATIC TUNING UNIT ASSEMBLY									
5	56915	12 I.F. TRANS. ASSEMBLY									
6	95-598	22 I.F. TRANSFORMER									
7	M3-515	BAND SWITCH									
8	100-79	BALLAST TUBE									
9	100-39	PILOT LIGHT 29 V.-17A.									
10	MS-517	20P I.F. PRI.									
11	3-7005	22M I.F. SEC.									
A		12 I.F. TRANS. PRI.									
B		12 I.F. SEC.									
C		20P I.F. PRI.									
D		22M I.F. SEC.									
F		BROADCAST OSC. (ON GANG)									
G		ANTENNA BROADCAST(-)									

FRONT OF CHASSIS
 12Q7G-2ND DET. 12K7G-I.F.
 35L6G-OUTPUT
 50Z7G-RECT.
 12A8G-DET. OSC.
 100-79 BALLAST



Models 6P418, 6P419, 6P456 6P429, 6P430, 6P447, 6P448, 6P457
 CHASSIS No. 5662