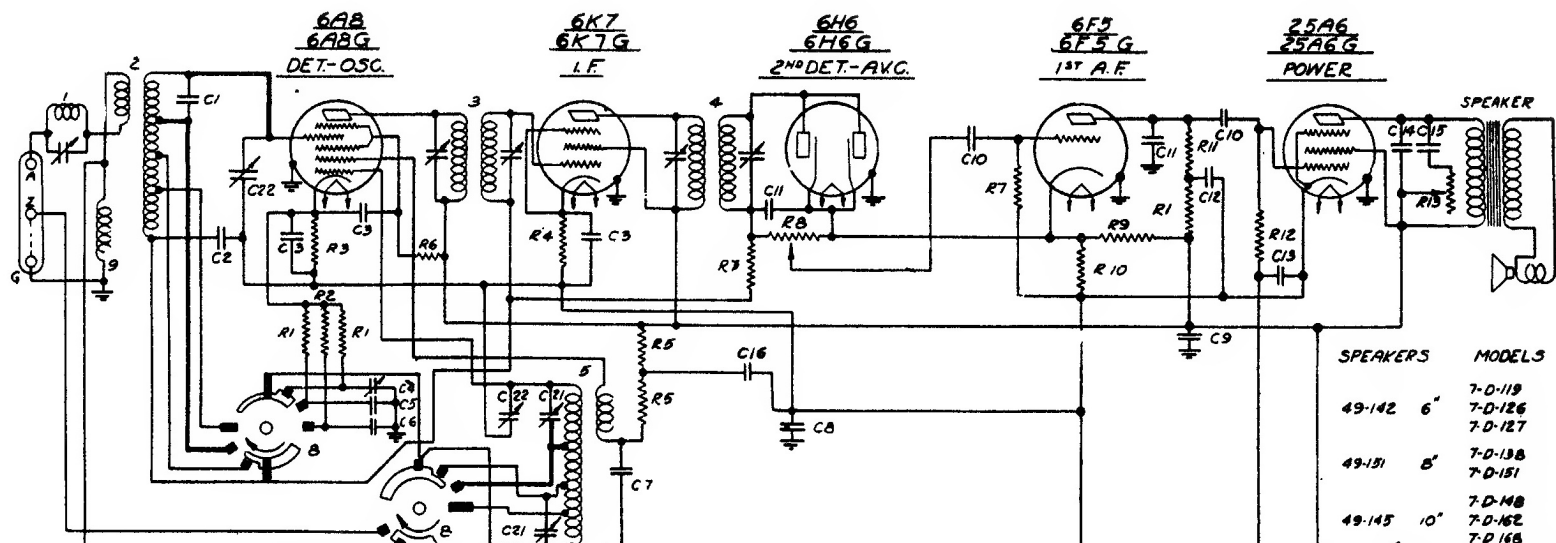


CIRCUIT DIAGRAM—Models 7-D-119, 7-D-126, 7-D-127, 7-D-138, 7-D-151, 7-D-148, 7-D-162, 7-D-168. (Chassis No. 5707)

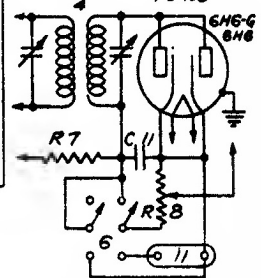
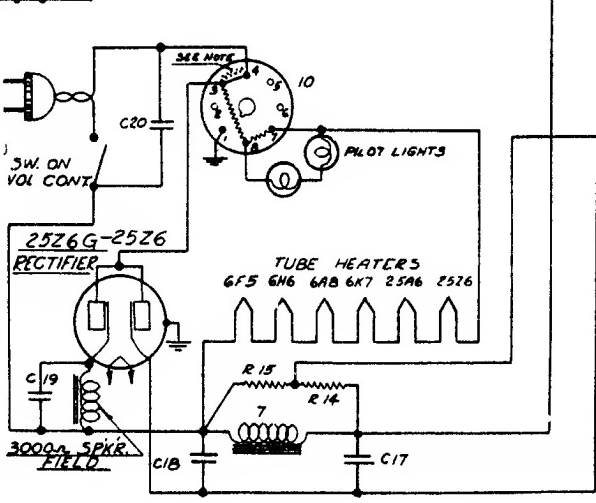


SPEAKERS	MODELS
49-142 6"	7-D-119 7-D-126 7-D-127
49-131 8"	7-D-138 7-D-151
49-145 10"	7-D-148 7-D-162 7-D-168

DWG NO	PART DESCRIPTION	DWG NO	PART DESCRIPTION
C1	22-309 5MMFD 600V R12	63-230	260M OHMS 1/4W
C2	22-487 02 MFD 400V R13	63-521	50M.Λ. TONE CONT
C3	22-250 05 MFD 200V R14	63-482	650M OHMS 1/4W
C4	22-208 200-350MMFD OSC. PADDER R15	63-481	400M OHMS 1/4W
C5	22-384 005 MFD 600V		
C6	22-415 205 MFD 600V		
C7	22-486 304 MFD 600V		
C8	22-350 25 MFD 200V		
C9	22-212 05 MFD 400V	1	20-133 WAVE TRAP
C10	22-188 02 MFD 400V	2	3-4343 ANT. COIL ASSEMBLY
C11	22-162 000 MFD 600V	3	95-35B 1 1/2" I.F. TRANS.
C12	22-190 1 MFD 200V	4	95-359 2 1/2" I.F. TRANS.
C13	22-487 2 MFD 200V	5	2-4314 OSC. COIL ASSEMBLY
C14	22-329 005 MFD 600V	6	85-33 PHONO SWITCH
C15	22-170 1 MFD 400V	7	95-348 POWER CHOKER
C16	22-515 (4 MFD DRY ELEC 250V	8	85-89 BAND SEL. SWITCH
C17	22-515 (8 MFD " 250V	9	20-134 ANT. CHOKER
C18	22-516 (4 MFD " 250V	10	100-38 BALLAST TUBE 117V
C19	22-516 (4 MFD " 250V	10-45	BALLAST TUBE 185V
C20	22-455 0 MFD 1200V	100-46	BALLAST TUBE 190V
C21	22-402 2-35MMFD TRIMMER	100-47	BALLAST TUBE 200V
C22	22-482 VARIABLE	100-48	BALLAST TUBE 220V
		100-49	BALLAST TUBE 250V
		11	44-7 PHONO JACK

R1	63-278 99M OHMS	1/4W
R2	63-280 49M OHMS	1/4W
R3	63-362 100 OHMS	1/4W
R4	63-357 900 OHMS	1/4W
R5	63-361 57M OHMS	1/4W
R6	63-288 191M OHMS	1/4W
R7	63-293 990M OHMS	1/4W
R8	63-520 400M.Λ. VOL. CONT.	
R9	63-442 50M OHMS	1/4W
R10	63-515 530 OHMS	1/4W
R11	63-376 190M OHMS	1/4W

NOTE—
PINS 3 & 4 SHOULD
CIRCUIT INTERNALLY
IN 100-38, 100-45
AND 100-48 ONLY



CIRCUIT CHANGES
FOR PHONOGRAPH
I.F. FREQUENCY 456 K.C.
7 TUBE SUPERHETERODYNE
CHASSIS NO 5707 AC-DC.

ZENITH RADIO CORP