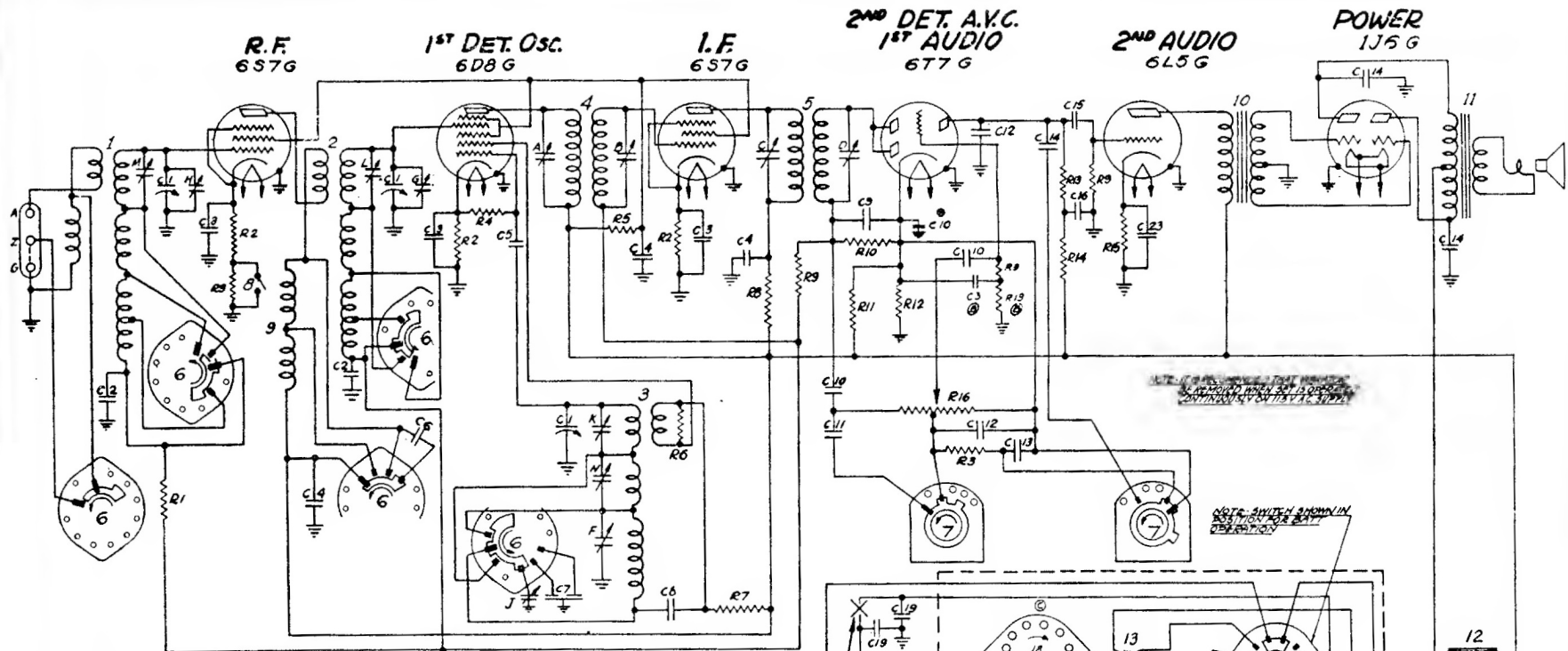
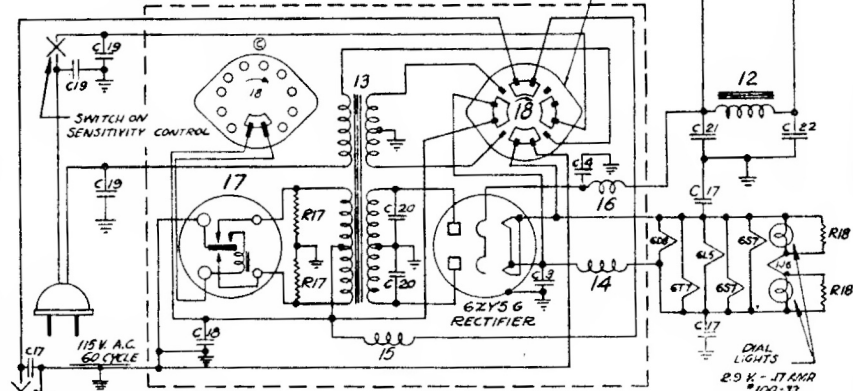


Models 7-J-232, 7-J-259 (5711 Chassis)



DIAG. NO.	PART NO.	DESCRIPTION	DIAG. NO.	PART NO.	DESCRIPTION
C1	22 348	THREE GANG VARIABLE	R6	63-64B	47 M OHM 1/4W%20
C2	22 437	.05 MFD. 400 V.	R5	43-67B	47 M OHM 1/2W%10
C3	22 250	.05 MFD. 200 V.	R6	63-53B	10 M OHM 1/4W%20
C4	22 218	.05 MFD. 400 V.	R7	63-79B	10 M OHM 1/2W%10
C5	22 289	.50 MFD. 600 V.	R8	63-605	1000 OHM 1/2W%10
C6	22 127	.25 MFD. 600 V.	R9	63-271	1MEG OHM 1/4W%10
C7	22 350	DUAL FIXED PADDED	R10	63-630	390 M OHM 1/4W%10
C8	22 358	.002 MFD. 600V	R11	63-160	100 M OHM 1/2W%10
C9	22 162	.001 MFD. 600V	R12	63-634	330 OHM 1/4W%10
C10	22 327	.02 MFD. 200 V.	R13	63-597	470 M OHM 1/4W%20
C11	22 182	.00025 MFD. 600V	R14	63-636	270 M OHM 1/4W%10
C12	22 147	.0005 MFD. 600V	R15	63-797	2200 OHM 1/2W%10
C13	22 229	.005 MFD. 600V	R16	43-56B	2MEG OHM VOLUME CONTROL
C14	22 492	.002 MFD. 600V	R17	63-577	100 OHM 1/4W%10
C15	22 188	.02 MFD. 400 V.	R18	63-801	21 OHM (WIREWOUND) 1/2W%10
C16	22 170	.1 MFD. 400 V.	R19	63-596	330 M OHM 1/4W%20
C17	22 350	.25 MFD. 200 V.			
C18	22 139	.5 MFD. 200 V.			
C19	22 435	.02 MFD. 600V			
C20	22 574	.02 MFD. 600V			
C21		8 MFD ELECTROLYTIC 250			
C22	22 577	8 MFD " 250V			
C23		10 MFD " 25V.			
R1	63-395	100 M OHM 1/4W%20	1	5-5017	ANT. COIL & SHIELD ASSEM.
R2	43-632	560 OHM 1/4W%10	2	5-5018	DET. COIL & SHIELD ASSEM.
R3	43-593	47M OHM 1/4W%20	3	5-5163	OSC. COIL & SHIELD ASSEM.
			4	35-416	1ST. I.F. TRANSFORMER
			5	35-417	2ND I.F. TRANSFORMER
			6	85-103	BAND SELECTOR SWITCH
			7	85-108	TONE CONTROL SWITCH
			8	85-117	SENSITIVITY SWITCH
			9	20-185	R.F. CHOKES
			10	35-446	AUDIO TRANSFORMER



I.F. FREQUENCY 456 K.C.
 7 TUBE SUPERHETERODYNE
 CHASSIS NO. 5711
 6 VOLT D.C. ~ 115 VOLT A.C.
ZENITH RADIO CORPORATION