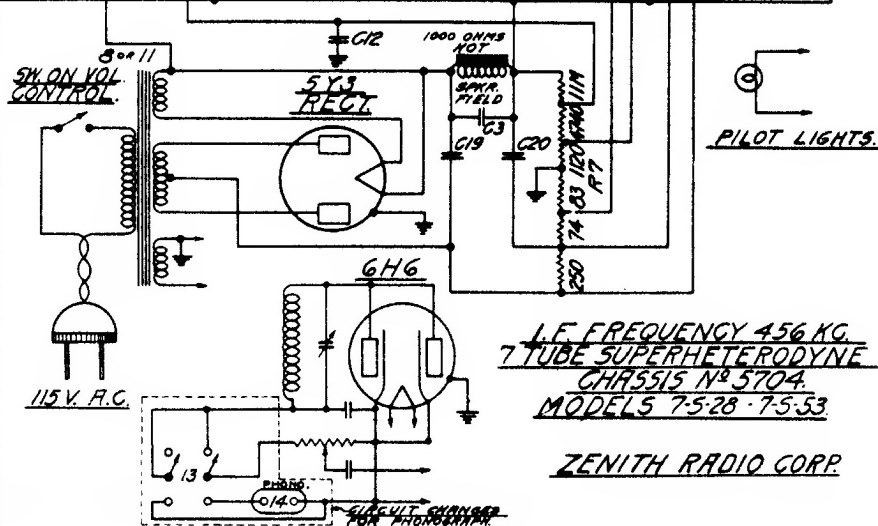


DRG. NO.	PART NO.	DESCRIPTION
C1	22-243	01 400V
C2	22-410	003 600V
C3	22-170	.1 400V
C4	22-289	.00005 600V
C5	22-409	VARIABLE
C6	22-127	.000025 600V
C7	22-212	.05 400V
C8	22-411	0023 600V
C9	22-345	0011 600V
C10	22-205	200-550 PRODR
C11	22-82	.001 600V
C12	22-224	1 300V
C13	22-158	.02 400V
C14	22-420	10 MFD 25V
C15	22-162	0.001 600V
C16	22-435	.02 600V
C17	22-190	.1 200V
C18	22-417	.1 600V
C19	22-416	8 MFD 450V
C20	22-416	8 MFD 490V
C21	22-408	2 MFD 490V
C22	22-408	2-35 MMFD
C23	22-250	.05 200V

DRG. NO.	PART NO.	DESCRIPTION
R1	63-273	99M OHMS 1/2W
R2	63-373	11M 1/2W
R3	63-355	19M 1/2W
R4	63-290	49M 1/2W
R5	63-457	400M OHMS 1/2W
R6	63-293	990M OHMS 1/2W
R7	63-453	CANDOMM 1/2W
R8	63-466	990 OHMS 1/2W
R9	63-258	490M 1/2W
R10	63-450	50M TUNE CONTROL

1	5-3697	ANT. COIL ASSEM.
2	20-82	ANT. CHOK (1MM.)
3	5-3690	DET. COIL ASSEM.
4	95-291	1ST I.F. TRANS.
5	95-292	2ND I.F. TRANS.
6	5-3699	OSC. COIL ASSEM.
7	49-117	6-SPKR. - MOD. 75-28
8	95-289	POWER TRANS. 60V
9	20-119	R.F. PLATE CHOK ASSEM.
10	85-78	BAND SELECT SWITCH
11	95-290	POWER TRANS. 25V
12	49-122	12" SPKR. MOD. 75-53
13	85-39	PHONO SWITCH
14	44-7	TRAC.



I.F. FREQUENCY 456 KC.  
7 TUBE SUPERHETERODYNE  
CHASSIS N<sup>o</sup> 5704  
MODELS 7-5-28 · 7-5-53

ZENITH RADIO CORP.