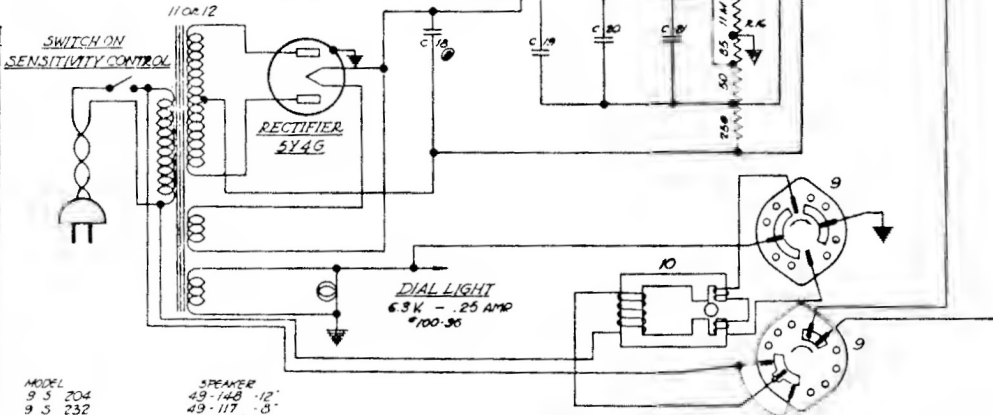


DIAG. NO.	PART NO.	DESCRIPTION	VALUES
	C1	TRIPLE GANG VARIABLE CONDENSER	200 V
	C2	.05 MFD	400 V
	C3	1 MFD	400 V
1	S-5017	ANTENNA COIL & SHIELD ASSEMBLY	600 V
2	S-5018	DETECTOR COIL & SHIELD ASSEMBLY	600 V
3	S-5019	OSCILLATOR COIL & SHIELD ASSEMBLY	600 V
4	416	1ST I.F. TRANSFORMER	600 V
5	417	2ND I.F. TRANSFORMER	200 V
6	103	BAND SELECTOR SWITCH	600 V
7	108	TOUR CONTROL SWITCH	600 V
8	109	SENSITIVITY CONTROL SWITCH	400 V
9	116	MOTOR CONTROL SWITCH	400 V
10	415	MOTOR	400 V
11	35-418	POWER TRANSFORMER 117V 50-60 CYCLE	450V
12	36-451	POWER TRANSFORMER ALL VOLTAGE 25 CYCLE	450V
13	36-335	SPEAKER TRANSFORMER	450V
14		R.F. CHOKE	450V
	C4	22-550	.002 MFD
	C5	22-212	.05 MFD
	C6	22-182	.00025 MFD
	C7	22-527	.02 MFD
	C8	22-142	.0001 MFD
	C9	22-147	.0005 MFD
	C10	22-326	.003 MFD
	C11	22-177	2 MFD
	C12	22-445	.004 MFD
	C13	22-435	.02 MFD
	C14	22-627	.002 MFD
	C15	22-569	12 MFD DRY ELECTROLYTIC
	C16		450V
	C17		2 MFD
	C18		.5 MFD
	C19		.5 MFD
	C20		200 V
	C21		.5 MFD
	C22		.5 MFD
	R1	63-609	22 M OHMS
	R2	63-393	47 M OHMS
	R3	63-535	100 M OHMS
	R4	63-581	470 OHMS
	R5	63-645	27 M OHMS
	R6	63-586	3300 OHMS
	R7	63-271	1 MEG OHMS
	R8	63-658	390 M OHMS
	R9	63-550	2 MEG OHM VOLUME CONTROL
	R10	63-608	15 M OHMS
	R11	63-296	220 M OHMS
	R12	63-654	180 M OHMS
	R13	63-597	470 M OHMS
	R14	63-605	1000 OHMS
	R15	63-660	10 M OHMS
	R16	63-570	5 SECTION CARBON
	R17		1 MEG OHM MOUNTED IN TUNING TUBE SOCKET



**I.F.-FREQUENCY 456 K.C.**  
**9TUBE SUPERHETERODYNE**  
**3BAND**  
**CHASSIS NO 5905**

Models 9-S-203, 9-S-232, 9-S-242, 9-S-244, 9-S-262, 9-S-263, 9-S-264 (5905 Chassis)