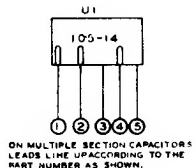
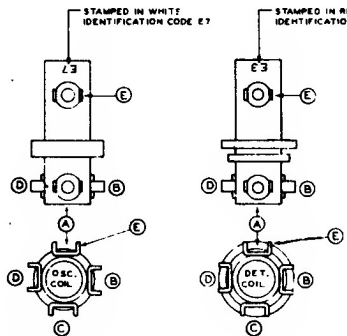
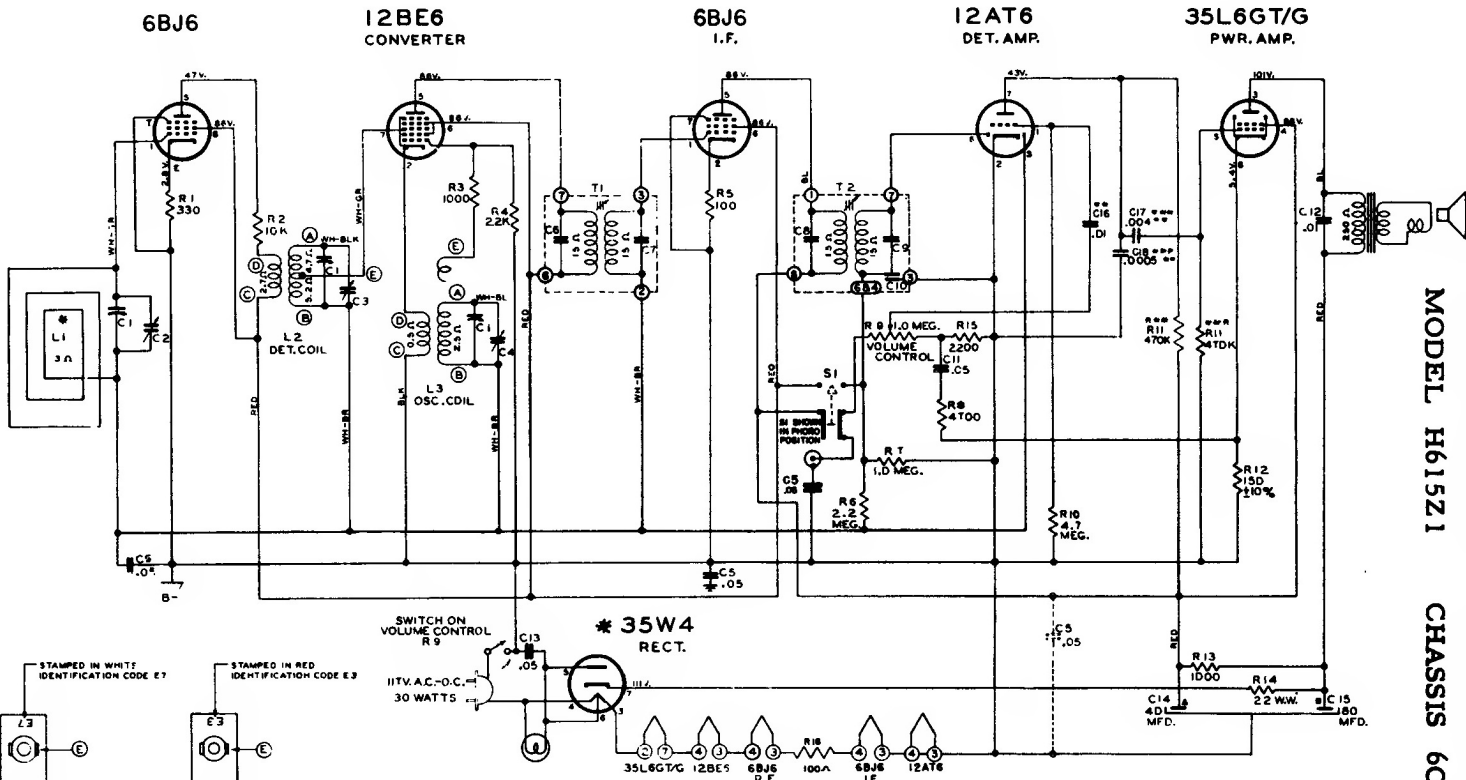


OPERATION	CONNECT OSCILLATOR TO ANTENNA GRID	DIAL TRIM FREQ.	INPUT SIG. FREQ.	DET. AT FREQ.	TRIMMERS	PURPOSE
1	Connector	.5 Mfd	455 Kc.	800 Kc.	Adjust Primary Slugs & Secondary Slugs	For I. F. Alignment
2	Slide Turn	--	1800 Kc.	1000 Kc.	C-4	Set Oscillator to Dial Scale.
3	Locks Coupled to Receiver	--	1400 Kc.	1400 Kc.	C-3	Detector Alignment
4	Mount	1400 Kc.	1400 Kc.	1400 Kc.	C-2	Antenna Alignment

ALIGNMENT PROCEDURE



ON MULTIPLE SECTION CAPACITORS LEAD LINE UPACCORDING TO THE PART NUMBER AS SHOWN.

ALL VOLTAGES MEASURED FROM COMMON RETURN TO POINTS INDICATED WITH AN A.C., D.C. OR VACUUM TUBE VOLTMETER.

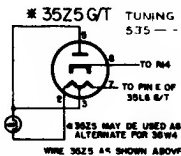
ALL VOLTAGES ARE D.C. UNLESS OTHERWISE SPECIFIED  
ALL RESISTORS ±20% TOLERANCE UNLESS OTHERWISE SPECIFIED

↓ DENOTES CHASSIS  
⊕ DENOTES COMMON RETURN

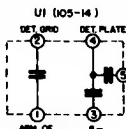
USE ONLY ZENITH NON-INDUCTIVE ELECTROLYTIC CONDENSERS FOR REPLACEMENT. IF ANY OTHER TYPE OF ELECTROLYTIC IS USED, IT WILL BE NECESSARY TO ADD C5 SHOWN IN DOTTED LINES.

I.F. FREQUENCY 455KC.

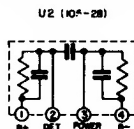
TUNING RANGE 535 - 1620 KC.



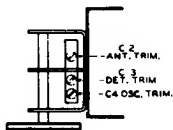
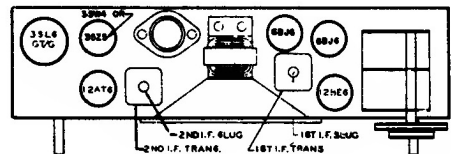
I.F. TRANSFORMER NUMBERING STARTS WITH #1 TERMINAL, AS FIRST TERMINAL GLOSSIFERS AND ADJACENT TO MARKER AS VIEWED FROM BOTTOM OF CHASSIS.



\*\*\* WHEN USING U1 OMIT  
C6 - .01 MFD  
C7 - .004 MFD  
C8 - .0005 MFD  
R11 - 470K  
R11 - 470K



\*\*\* WHEN USING U2 OMIT  
C6 - .01 MFD  
C7 - .004 MFD  
C8 - .0005 MFD  
R11 - 470K  
R11 - 470K



ZENITH RADIO CORPORATION

MODEL H615Z1

CHASSIS 6G05Z1