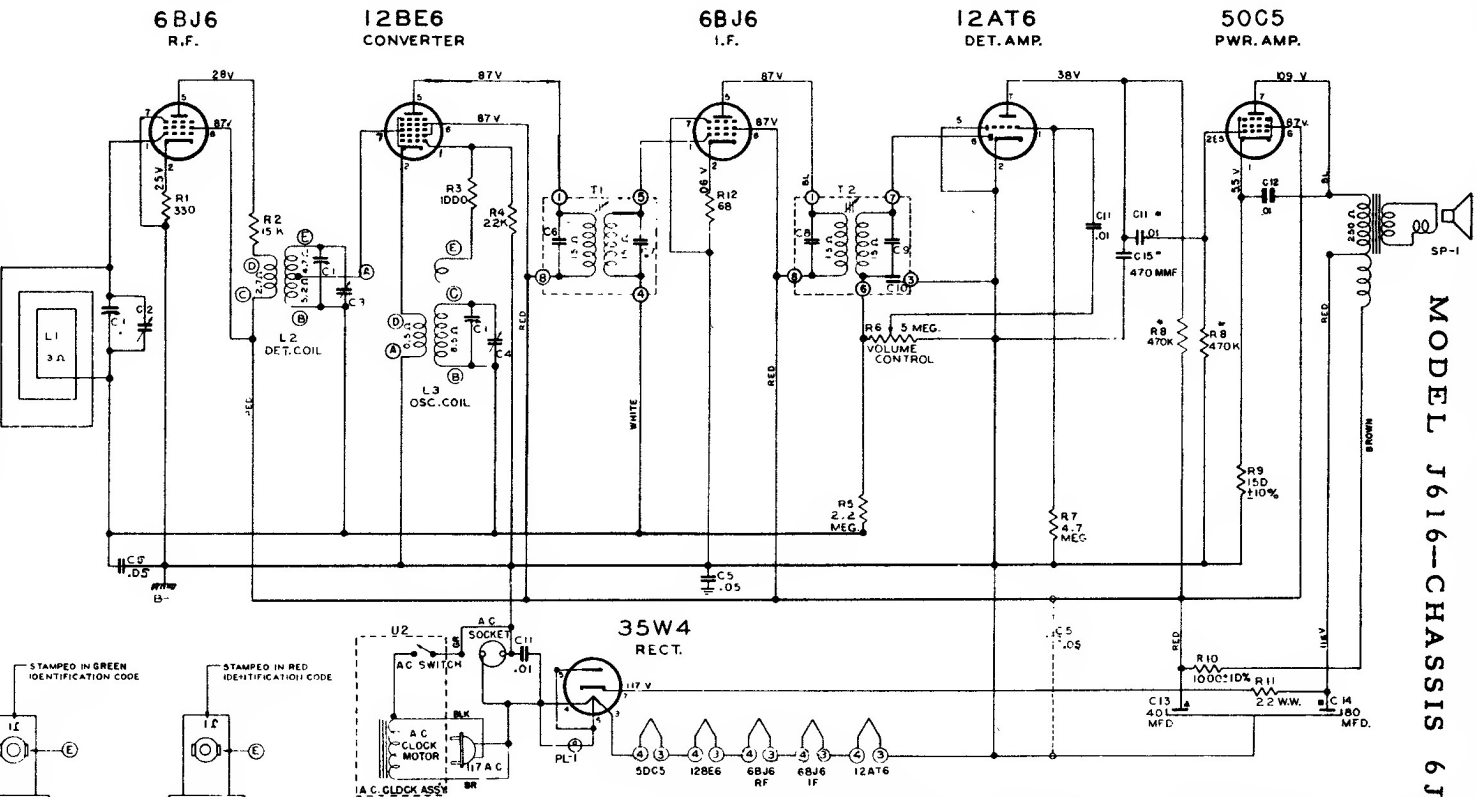


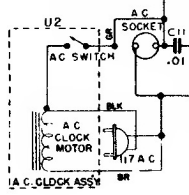
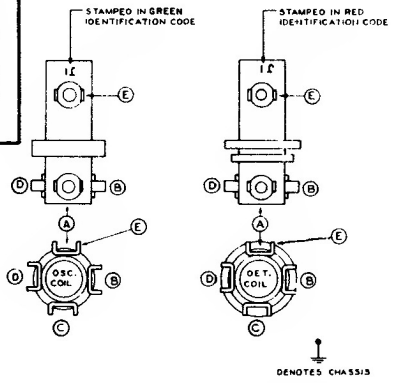


OPERATION	CONNECT OSCILLATOR TO ANTENNA	DIPKEY INPUT FREQUENCY	SET DIAL AT	TRIMMERS	PURPOSE	
1	CPL	.5 MID.	455 Kc.	600 Kc.	Adjust Primary & Secondary Slugs	For I.F.
2	Single Turn Loosely Coupled to Wave Magnet	--	1600 Kc.	1600 Kc.	C-4	Set Oscillator to Dial Scale.
3	--	--	1400 Kc.	1400 Kc.	C-3	Detector Alignment
4	--	--	1400 Kc.	1400 Kc.	C-2	Antenna

ALIGNMENT PROCEDURE



MODEL J616--CHASSIS 6J03



ALL VOLTAGES MEAS. TO COMMON RETURN TO POINTS INDICATED WITH AN A.C., D.C. OR VACUUM TUBE VOLTMETER.

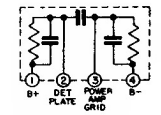
ALL VOLTAGES ARE D.C. UNLESS OTHERWISE SPECIFIED.

ALL RESISTORS 120% TOLERANCE UNLESS OTHERWISE SPECIFIED.

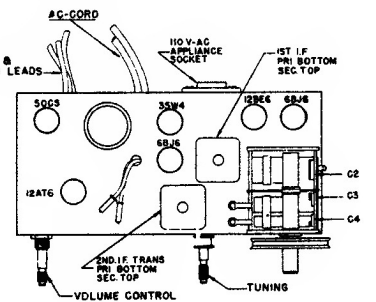
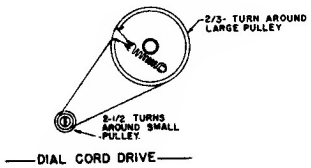
USE ONLY ZENITH NON-INDUCTIVE ELECTROLYTIC CONDENSERS FOR REPLACEMENT IF ANY OTHER TYPE OF ELECTROLYTIC IS USED, IT WILL BE NECESSARY TO ADJ. C5 (SHOWN IN DOTTED LINE).

I.F. TRANSFORMER NUMBERING STARTS WITH #1 TERMINAL, AS FIRST TERMINAL CLOCKWISE AND ADJACENT TO MARKER AS VIEWED FROM BOTTOM OF CHASSIS.

* U1 (105-27)



* WHEN USING U1 OMT
C1 - .05 RED
C15 - 470 MMF.
R8 - 470 K



ZENITH RADIO CORPORATION

MODEL J616

CHASSIS 6J03